

Figure --Berger 1983- Borrelia burgdorferi in EM lesion--original figure15 from article

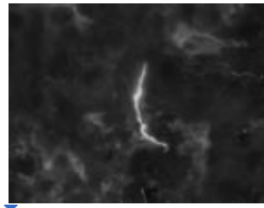


Figure --MacDonald - Borrelia burgdorferi in Indirect immunofluorescence - Positive control in tissue

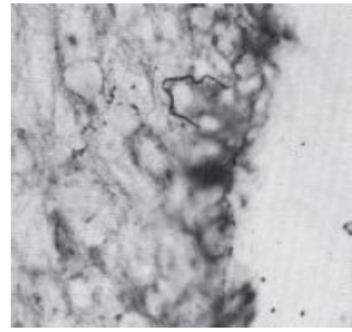


Figure --Berger 1983 Borrelia burgdorferi in EM lesion - original Figure 15 from article



Figure --MacDonald Borrelia burgdorferi Non Coiled form - Positive control using B31 strain in culture

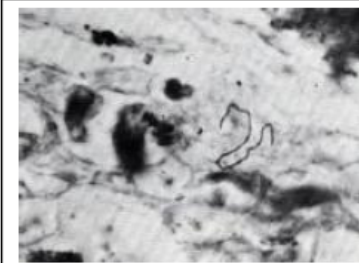


Figure --Berger 1983 Borrelia burgdorferi in EM lesion -- Original figure 11 from article

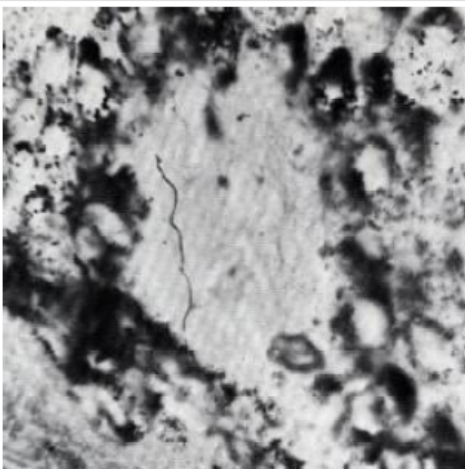


Figure --Berger 1983 Borrelia burgdorferi in EM lesion - original Figure 13 from article

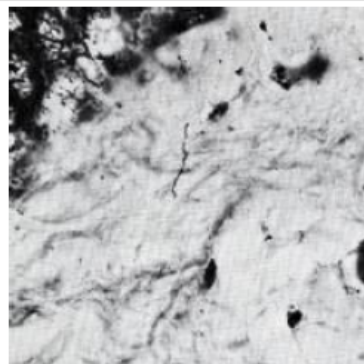


Figure --Berger 1983 borrelia burgdorferi in EM lesion - original figure 12 from article

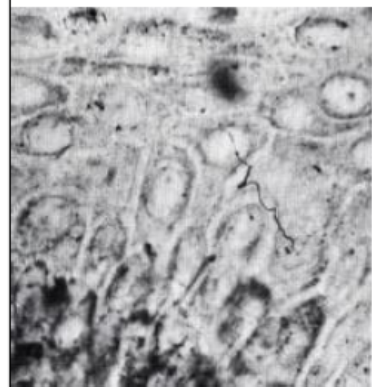


Figure --Berger 1983 Borrelia burgdorferi in EM Lesion--original figure14 from article